

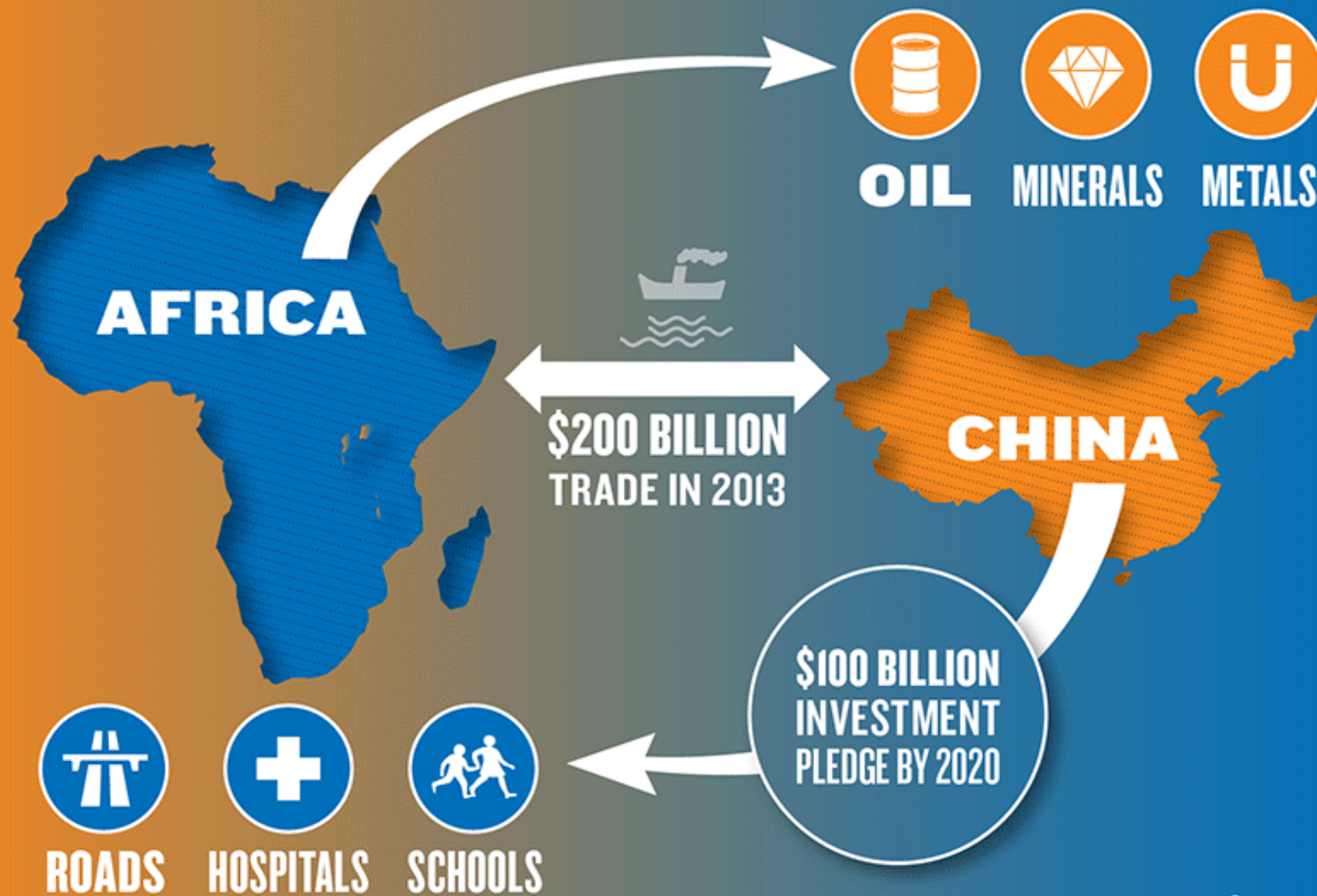
JOSH MAIYO

LECTURER INTERNATIONAL
RELATIONS WEBSTER
UNIVERSITY / LEYDEN
CAMPUS

FREE UNIVERSITY



CHINA IN AFRICA: A NEW COLONIAL EMPIRE?



Source: IMF

Perceptions of China in Africa | 36 countries | 2014/2015

China ranks 2nd



- as a development model (after the U.S.)
- as greatest external influence (after the former colonial powers)

Top factors contributing to:

• a **positive**

image of China:
Investments in infrastructure
and business development



• a **negative**

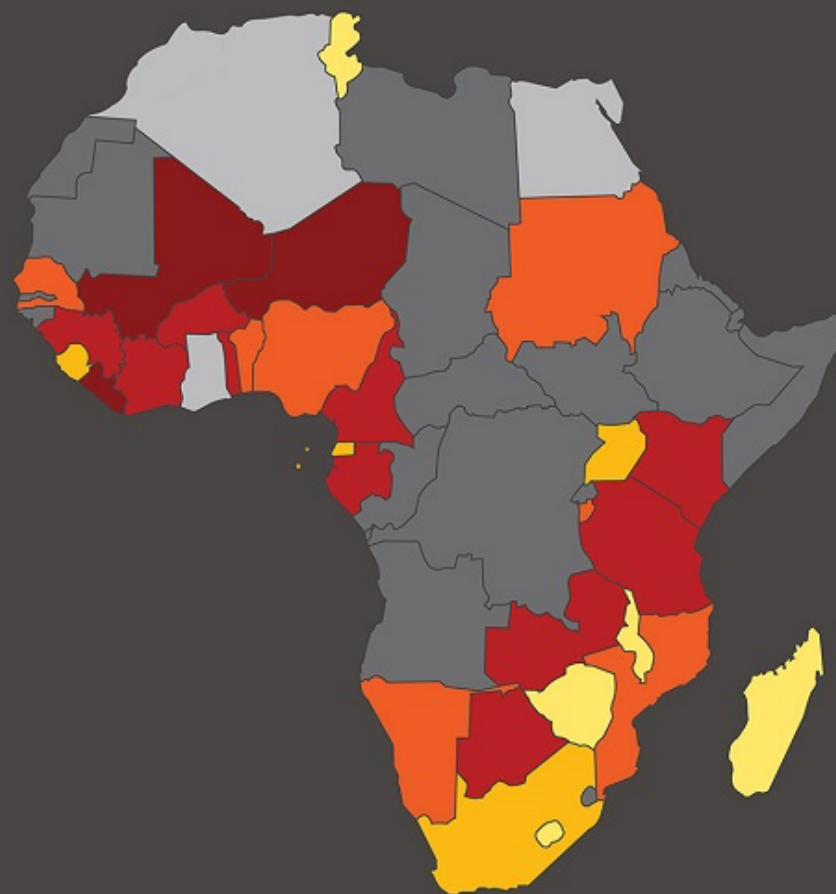
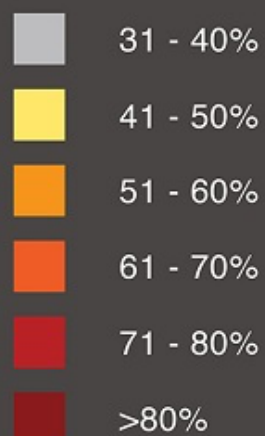
image of China:
Poor quality
of products

China is a “somewhat” or
“very” positive influence
in their country:

63%

(average all countries)

Key



AFROBAROMETER

